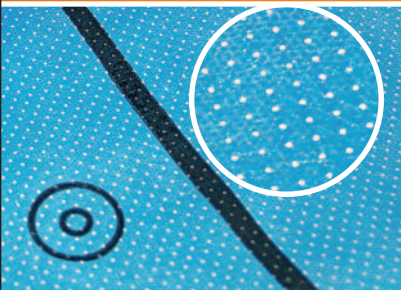


Unique rubberized dimpled technology for category leading skid resistance.

Get a better grip on Vicwest underlayments



Now, get leading edge underlayment that's tougher, lighter and outperforms the rest... and all at a lower cost!

Vicwest now offers you two of the most advanced, skid-resistant underlayments for your most challenging or wet roofing projects. Take our new **Synthetic Underlayment** for example; its topside rubberized dimples provide best in class wet surface skid resistance for contractor safety, while underneath the anti-slip surface prevents the underlayment from sliding on the deck prior to fastening. Or, try our **Self-Adhered HT (High Temp) Underlayment**. The perfect skid-resistant solution for metal roofing applications, it features a 250° High Temp and 20° Low Temp adhesive.

Bottom line? You get the safest, most advanced underlayment technology available anywhere... and at a surprisingly low cost. Read on and choose the one that's right for your project.

Vicwest Synthetic Underlayment

- Skid resistant top surface and bottom anti deck-slip surface
- Designed with high strength polymers with 30X the strength of felt underlayment
- Strengthened material reduces blow offs during exposed roof conditions and reduces fastener pull
 - 6X lighter than typical 30 lb. felt underlayment's
 - Width of 41.5" or 105 cm providing for faster installation times, fewer rolls, fewer laps and fewer fasteners
 - Class A Fire rating when used with Vicwest steel profiles
 - Up to 6 months of UV protection before the primary Vicwest Roof profile is required to be installed
 - The cool blue color delivers lowered surface temperatures, lower heat absorption and low glare
- Available in 500 sq. ft. (46.4 sq. m) and 1000 sq. ft. rolls (92.9 sq. m)
- 30 year limited warranty

Measurements

- 500 sq. ft. (46.4 sq. m) coverage area
Roll is 41.5" x 145' (105 cm x 44 m) in length
- Weighs 18.5 lbs. or 8.4 kgs per roll (or 1.85 lbs. per sq. ft.)
- 1000 sq. ft. (92.9 sq. m) coverage area
Roll is 41.5" x 290' (105 cm x 88.4 m) in length
- Weighs 37 lbs. or 17 kgs per roll (or 3.7 lbs. per sq. ft.)
- 30 rolls per pallet weighing 1100 lbs. or 500 kgs

Vicwest Self-Adhered HT Underlayment

- Peel and stick underlayment
- Split poly release film liner vs. paper
- Topside skid resistant surface for contractor safety
- Designed with high strength polymers with 30x times the strength of felt underlayment
- Strengthened material reduces blow offs during exposed roof conditions and reduces fastener pull
- Up to 6 months of UV protection before the primary Vicwest Roof profile is required to be installed
- The cool blue color delivers lowered surface temperatures, lower heat absorption and low glare
- 30 year limited warranty

Measurements

- 36" wide x 66.7 ft. (91.4 cm x 20.3 m)
- Weighs 45 lbs. per roll (21 kg)
- 30 rolls per pallet

See reverse for specifications and installation instructions



 **vicwest**
vicwest.com

Installation: Use no staples*

Vicwest synthetic roofing underlayment

must be installed above properly ventilated spaces, as the underlayment is considered a vapor barrier (follow all applicable building codes). The deck surface must be 2:12 slope or greater, dry, and free of dust, dirt, voids, loose nails and other protrusions. Damaged sheathing must be replaced. The use of a rosin paper slip-sheet is not required underneath metal roofing systems. Installation is limited to use with roof coverings that do not involve hot asphalt or coal-tar pitch.

Vicwest underlayment is installed horizontally with the printed side up, and with 3-inch horizontal laps and 6-inch vertical laps. Overlaps must run with the flow of the water in a staggered pattern. The underlayment is only attached to the roof deck with roofing nails having 1-inch minimum diameter plastic or steel caps. **Do not staple.** Cap nails* are spaced at 6 inches on center at vertical laps, and at 11 inches on center at horizontal laps. In the field area, apply fasteners at 13 inches spaced vertically and 22 inches on center horizontally. All fasteners must be fully flush with the underlayment surface. Do not install fasteners over unsupported areas/voids. Repair all tears, holes, or damage to the underlayment.

In coastal areas, high wind conditions, or prolonged exposure, double the fastener schedule at minimum. (For Florida Miami-Dade/Broward **High Velocity Hurricane (HVHZ)**, see FL-5325 (HVHZ) code approval). In addition, secure laps by

folding all laps over before nailing, or taping securely across lap seams using exterior grade sheathing tape, or using sealants such as roofing cement (asbestos free meeting ASTM D4586), EPDM, or Butyl to seal laps.

For batten secured installations, use only adequate length ring shanked nails or screws to secure battens to the roof deck. When battens are installed over Vicwest underlayment, the underlayment need only be preliminarily attached with roofing nails pending attachment of the battens or counter-battens. Layout underlayment such that fasteners will not interfere with batten installation.

For slopes less than 4:12, use a full 20" half lap over the underlying course. Apply underlayment up all abutments at least 6 inches.

Depending on roof pitch and surface conditions, blocking may be required to support roofing materials. Use caution when walking on underlayment that has not been fastened to the deck.

Vicwest underlayment is not designed to replace the primary roof covering material, or for indefinite outdoor exposure. Final roofing must be installed within 6 months.

** "Cap nails" should only be used when steel roofing is not scheduled to be immediately installed. Cap nails will show through on a steel roof. If steel roofing will be immediately installed, roofing nails should be used.*

Vicwest Self Adhered Underlayment

Technical Specifications		
Property	Method	Typical Value
Color	-	Cool Blue
Top Surface	-	Anti-skid Polymer
Bottom Release Liner	-	Silicone Split Release Poly
Permeability	ASTM E96-00	0.01 perms
Nominal Thickness	ASTM D1777	40 mil (1 mm)
Nail Sealability	ASTM D1970	Pass
Lap Sealability	ASTM D1970	Pass
Tensile Strength	ASTM D226	121 lbf/in. (21 kN/m)
Tear Strength	ASTM D4523	160 lbf/in. (28 kN/m)
Elongation	ASTM D2523-00	16%
Low Temp. Flex.	ASTM D1970	-22° F (-30° C) - Pass
Adhesion to Plywood	ASTM D1876	55 lbf/in.: 75° F (9.6 kN/m: 24° C)
Adhesion to Plywood	ASTM D1876	23 lbf/in.: 40° F (4 kN/m: 4.4° C)
UV Exposure	ASTM G90	6 months
Temperature Range	ASTM D1970	LT: 15° F (-9° C) to HT: 250° F (121° C)
Dimensions	-	36 in. x 66.7 ft. (91.4 cm x 20.3 m)
Square/Roll	-	2
Roll Weight	-	45 lbs. (21 kg)
Rolls/Pallet	-	30

Vicwest Synthetic Underlayment

Technical Specifications			
Property	Standard	Underlayment	30# Felt
Tensile Strength	ASTM D226	150 lbs.	30 lbs.
Tear Strength	ASTM D4533	50 lbs.	1.5 lbs.
Puncture Strength	ASTM D751	300 psi.	50 psi.
Cap Nail Pull Strength	TAS 117B	230 lbs.	40 lbs.
UV Rating	ASTM G90	>90%	<50%
Water Transmission	ASTM D4869	Pass	Pass
Surface Temperature	SDP	+10° F	+50° F
Water Absorption	ASTM D1970	0.1%	35%
Oils Leaching	SDP	N/A	Fail
Moisture Buckling	SDP	N/A	0.5 in.
Permeability	ASTM E96-A	0.10 Perms	8 Perms
Temperature Rating	SDP	-70° / 300° F	32° / 150° F
Class A*	ASTM E108 / UL 790	Pass	-
Thickness	ASTM D5147	25 mils.	60 mils
Weight Per Square	ASTM D5261	3.7 lbs.	28 lbs.

*Tile, Metal, Shingle, Slate, non-FR Shake

In accordance with ongoing efforts to improve our products and their performance, Vicwest reserves the right to change without notice the specifications contained herein.

The contents herein are for general information and illustrative purposes only and are not intended to serve as any type of advice. Every effort is made to ensure the accuracy of the information included in this brochure and it is believed that the information contained herein is accurate and reliable as of the date of publication. Vicwest, however, does not warrant or represent the accuracy or reliability of any information included in this brochure. Any reliance on any information without consultation with Vicwest or a duly authorized representative shall be at the user's own risk. ©2013, Vicwest Inc. - All rights reserved



vicwest.com